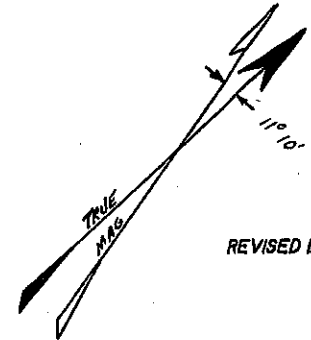
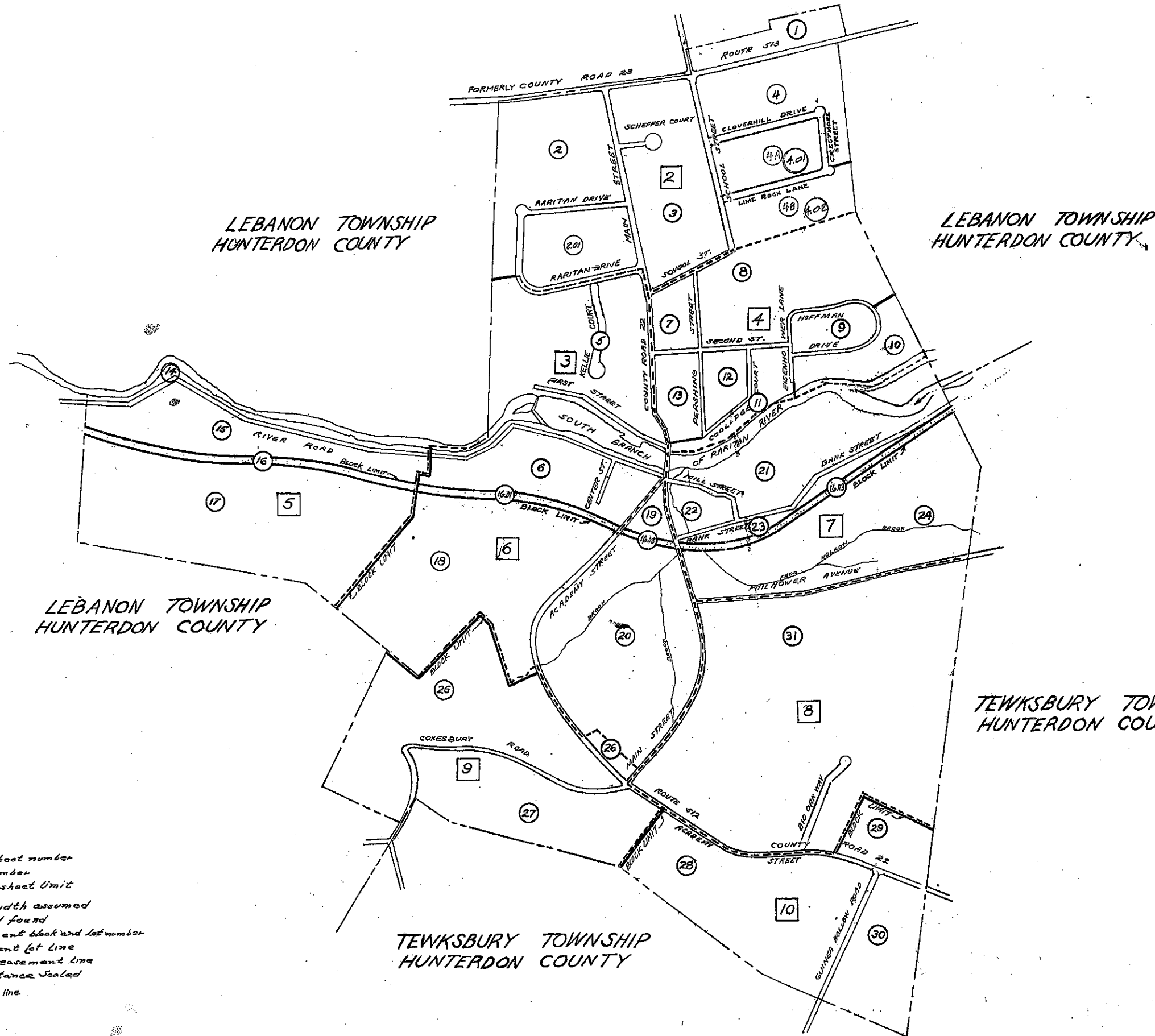


REVISIONS

DATE	NAME	NO.	SHEETS
1/78	ROBERT V. LAWSON II Lic. No. 33107	1	KEY MAP SH. 1-SH. 10
12-88	II	2	KEY MAP SH. 1,2,3,5,6,7
1-90	MICHAEL J. MANNING LIC. NO. 26797	3	KEY MAP SH. 1,3,4,8,10
12-90	MICHAEL J. MANNING LIC. NO. 26797	4	ALL SHEETS
1-93	MICHAEL J. MANNING LIC. 26797	5	KEY MAP, SH. 4 & 7
1-94	MICHAEL J. MANNING LIC. 26797	6	KEY MAP, SH. 3&6
9-94	MICHAEL J. MANNING LIC. 26797	7	KEY MAP, SH. 4
1-96	MICHAEL J. MANNING LIC. 26797	8	SH. 2,3,4,5,6,8,7
1-97	MICHAEL J. MANNING LIC. 26797	9	KEY MAP, SH. 2,3,6
10-98	MICHAEL J. MANNING LIC. 26797	10	KEY MAP, SH. 4,5,6,7,9
4-06	MICHAEL J. MANNING LIC. 26797	11	KEY MAP, SH. 2,3,4,8
1-12	WERNER A. MALL LIC. 37201	12	KEY MAP, SH. 2,3,4,6,7



REVISED BY KELLER & KIRKPATRICK, INC.

JAN. 12, 1990  
 DEC. 5, 1990  
 JAN. 6, 1997  
 OCT. 30, 1998  
 APRIL 17, 2006

LAKELAND ENGINEERING INC./P.C.

REV. DEC. 1985  
 REV. SEPT. 1988  
 REV. DEC. 1988

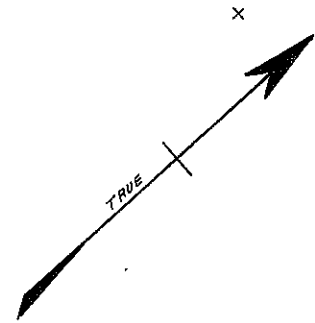
ROBERT C. BOGART & ASSOCIATES  
 ROUTE 31 & EMERY AVE., FLEMINGTON, NEW JERSEY

REVISED: MAY, 1973, NOV. 1, 1977, NOV. 1, 1978

NEW JERSEY DEPARTMENT OF THE TREASURY  
 DIVISION OF TAXATION  
 ENGINEERING & ROAD TAX BUREAU  
 APPROVED AS A TAX MAP PURSUANT TO THE  
 PROVISIONS OF CHAPTER 176, LAWS OF 1913, ETC.  
 FOR THE DIRECTOR, DIVISION OF TAXATION  
 BY: C.E. Bower per A.D.  
 STATE SUPERVISOR  
 DATE: FEB 25 1963 SERIAL NO. 384

SYMBOLS

- 3 Detail sheet number
- 5 Block number
- 5 Detailed sheet Unit
- 33 Street width assumed
- A No record found
- 7 Development block and lot number
- Development lot line
- R.O.W. or easement line
- 000's distance Sealed
- Block limit line.



LEBANON

TOWNSHIP

COUNTY

ROAD 513 (FORMERLY COUNTY RTE 23)



LEBANON TOWNSHIP

LEBANON TOWNSHIP

SHEET 3

SHEET 4

LAKELAND ENGINEERING, INC./PC.

REVISED BY KELLER & KIRKPATRICK, INC.

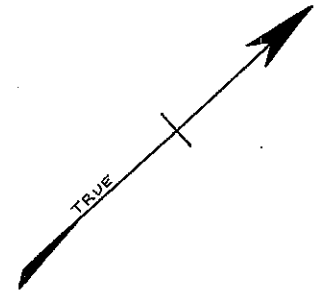
DEC. 5, 1990  
JAN. 17, 1996  
JAN. 6, 1997  
APRIL 17, 2006  
JAN. 12, 2012

REVISED: MAY, 1975; NOV. 1, 1977; NOV. 1, 1978

ROBERT C. BOGART & ASSOCIATES  
ROUTE 31 & EMERY AVE. FLEMINGTON, NEW JERSEY

NEW JERSEY DEPARTMENT OF THE TREASURY  
DIVISION OF TAXATION  
ENGINEERING & RAILROAD TAX BUREAU  
APPROVED AS A TAX MAP PURSUANT TO THE  
PROVISIONS OF CHAPTER 175, LAWS OF 1918, ETC.  
FOR THE DIRECTOR, DIVISION OF TAXATION

TAX MAP  
BOROUGH OF CALIFON  
HUNTERDON CO., NEW JERSEY  
SCALE 1"=100'  
DATE: DEC. 1962  
FREDERICK M. GALLOWAY  
CALIFON, NJ



LAKELAND ENGINEERING INC./P.C.

- ▲ REV. DEC. 1985
- ▲ REV. JAN. 1987
- ▲ REV. SEPT. 1988
- ▲ REV. DEC. 1988

REVISED BY KELLER & KIRKPATRICK, INC.

- JAN. 12, 1990
- DEC. 5, 1990
- JAN. 12, 1994
- JAN. 17, 1996
- JAN. 6, 1997
- APRIL 17, 2005
- JAN. 12, 2012

ROBERT C. BOGART & ASSOCIATES  
ROUTE 31 & EMERY AVE, FLEMINGTON, NEW JERSEY

REVISED: MAY, 1975, NOV, 1977, NOV. 1, 1978

NEW JERSEY DEPARTMENT OF THE TREASURY  
DIVISION OF TAXATION  
ENGINEERING & RAILROAD TAX BUREAU  
APPROVED AS A TAX MAP PURSUANT TO THE  
PROVISIONS OF CHAPTER 175, LAWS OF 1913, ETC.  
FOR THE DIRECTOR, DIVISION OF TAXATION

*C. Bogart*

**TAX MAP**  
BOROUGH OF CALIFON  
HUNTERDON CO., NEW JERSEY  
SCALE: 1"=100' DATE: DEC. 1962  
FREDERICK M GALLOWAY # 3668

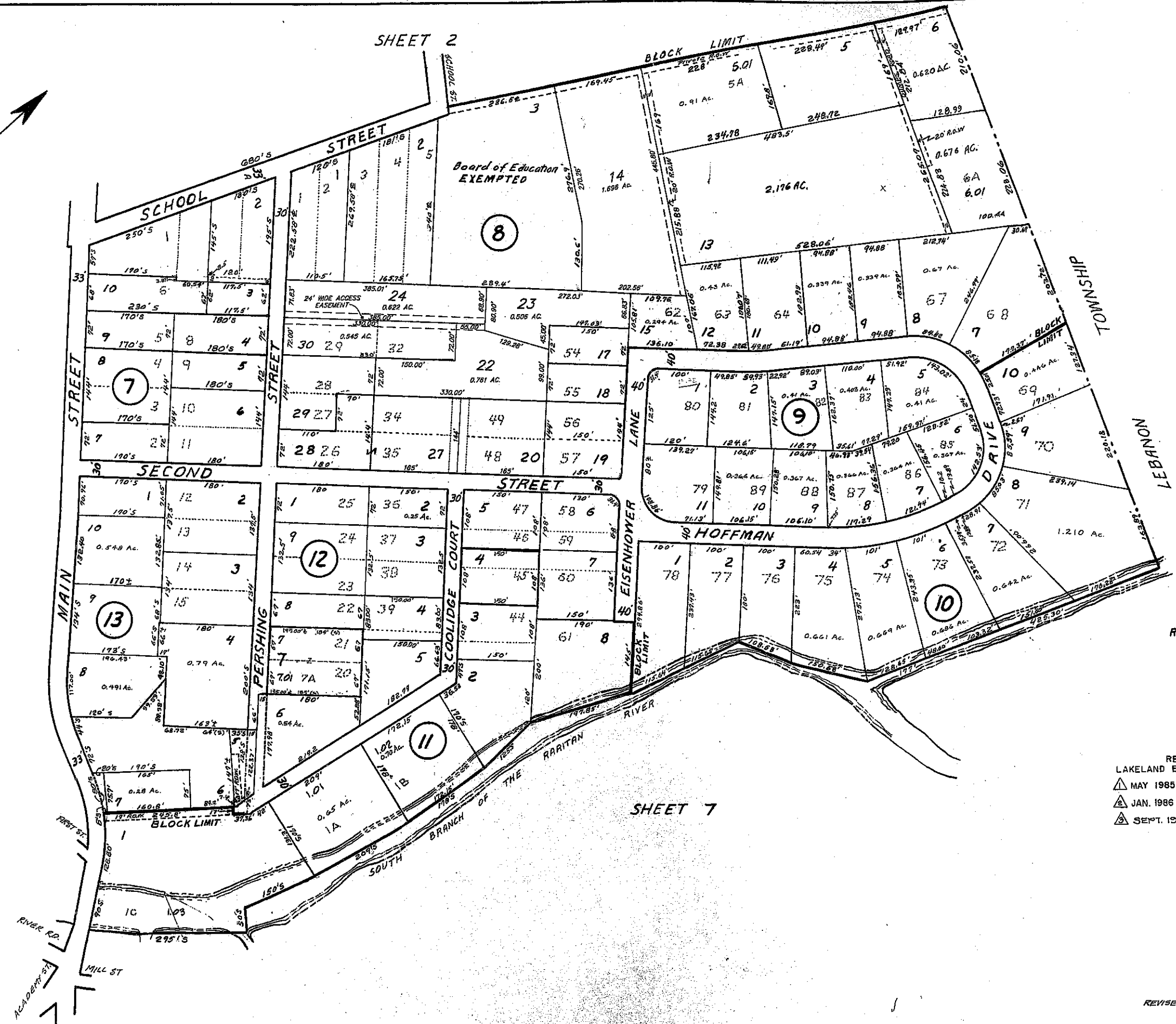
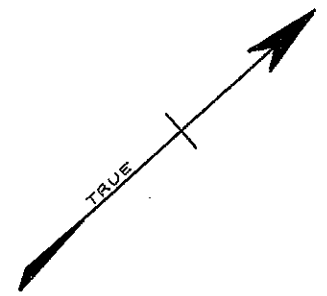
SHEET 6

SHEET 6

SHEET 5

SHEET 2

SHEET 4



SHEET 3

SHEET 2

SHEET 7

REVISED BY KELLER & KIRKPATRICK  
 A DIVISION OF K K & A Limited, Inc.  
 JAN. 12, 1990  
 DEC. 5, 1990  
 JAN. 25, 1993  
 SEP. 26, 1994  
 JAN. 17, 1996  
 OCT. 30, 1998  
 APRIL 17, 2006  
 JAN. 12, 2012

REVISED BY  
 LAKELAND ENGINEERING INC./P.C.  
 ▲ MAY 1985  
 ▲ JAN. 1986  
 ▲ SEPT. 1988

ROBERT C. BOGART & ASSOCIATES  
 ROUTE 51 & EMERY AVE., FLEMINGTON, NEW JERSEY

REVISED: MAY, 1975, NOV. 1, 1977, NOV. 1, 1978

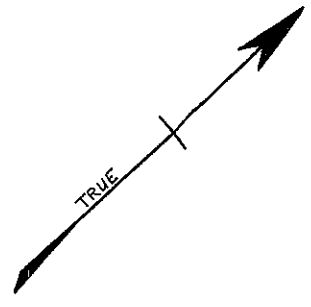
NEW JERSEY DEPARTMENT OF THE TREASURY  
 DIVISION OF TAXATION  
 ENGINEERING & RAILROAD TAX BUREAU  
 APPROVED AS A TAX MAP PURSUANT TO THE  
 PROVISIONS OF CHAPTER 176, LAWS OF 1913, ETC.  
 FOR THE DIRECTOR, DIVISION OF TAXATION  
*Clarence*

**TAX MAP**  
 BOROUGH OF CALIFON  
 HUNTERDON CO., NEW JERSEY  
 SCALE 1"=100' DATE: DEC. 1962  
 FREDERICK M. GALLOWAY #3668

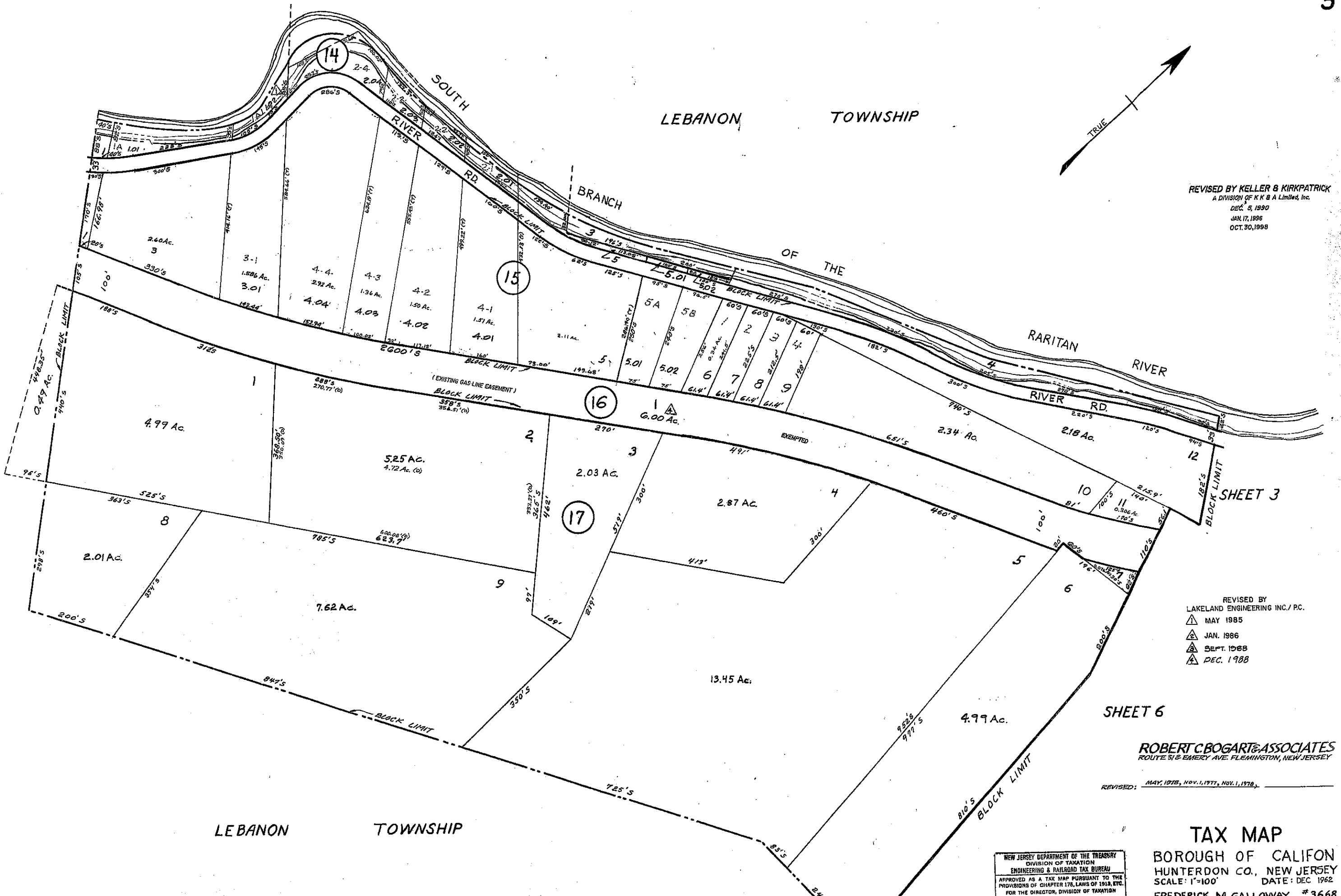
LEBANON TOWNSHIP

LEBANON TOWNSHIP

LEBANON TOWNSHIP



REVISED BY KELLER & KIRKPATRICK  
A DIVISION OF K K & A Limited, Inc.  
DEC. 5, 1990  
JAN. 17, 1996  
OCT. 30, 1998



SHEET 3

SHEET 6

REVISED BY  
LAKELAND ENGINEERING INC./ P.C.  
▲ MAY 1985  
▲ JAN. 1986  
▲ SEPT. 1988  
▲ DEC. 1988

ROBERT C. BOGART & ASSOCIATES  
ROUTE 318 EMERY AVE. FLEMINGTON, NEW JERSEY

REVISED: MAY, 1976, NOV. 1, 1977, NOV. 1, 1978

NEW JERSEY DEPARTMENT OF THE TREASURY  
DIVISION OF TAXATION  
ENGINEERING & RAILROAD TAX BUREAU  
APPROVED AS A TAX MAP PURSUANT TO THE  
PROVISIONS OF CHAPTER 176, LAWS OF 1918, ETC.  
FOR THE DIRECTOR, DIVISION OF TAXATION

TAX MAP  
BOROUGH OF CALIFON  
HUNTERDON CO., NEW JERSEY  
SCALE: 1"=100' DATE: DEC 1962  
FREDERICK M GALLOWAY #3668

SHEET 5

SHEET 3

SHEET 7

REVISED BY KELLER & KIRKPATRICK, INC.

DEC. 5, 1990  
 JAN. 12, 1994  
 JAN. 17, 1996  
 JAN. 6, 1997  
 OCT. 30, 1998  
 JAN. 12, 2012

REVISED BY LAKELAND ENGINEERING INC./P.C.

▲ MAY 1985  
 ▲ JAN. 1986  
 ▲ SEPT. 1988  
 ▲ DEC. 1988

SHEET 8

**ROBERT C. BOGART & ASSOCIATES**  
 ROUTE 31 & EMERY AVE. FLEMINGTON, NEW JERSEY

REVISOR: MAY, 1975, NOV. 1, 1977, NOV. 1, 1978  
 JAN., 1980 D. GREGORY N. S. L. S. 22471

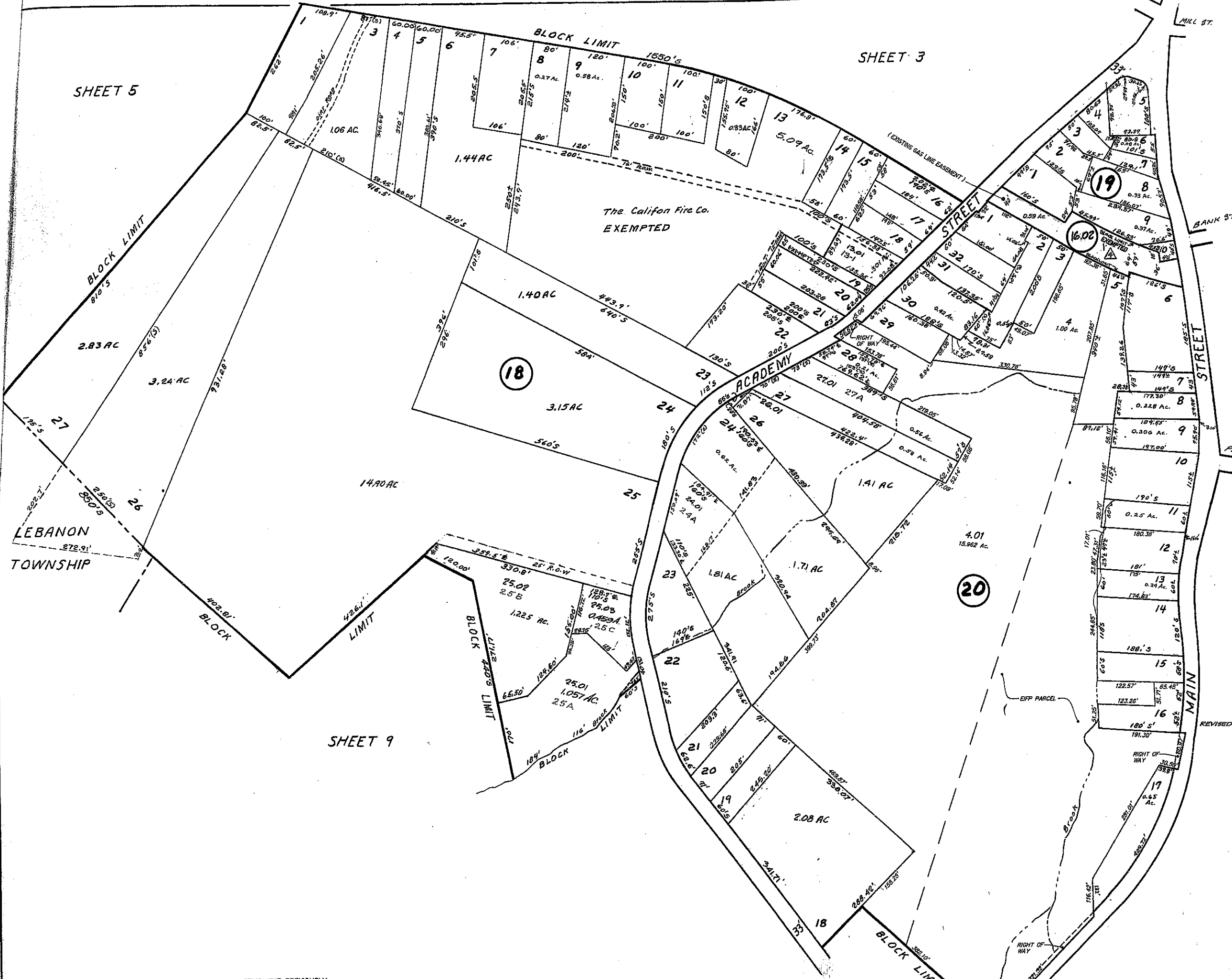
NEW JERSEY DEPARTMENT OF THE TREASURY  
 DIVISION OF TAXATION  
 ENGINEERING & RAILROAD TAX BUREAU  
 APPROVED AS A TAX MAP PURSUANT TO THE  
 PROVISIONS OF CHAPTER 175, LAWS OF 1913, ETC.  
 FOR THE DIRECTOR, DIVISION OF TAXATION  
 BY: *C. C. B...*  
 DATE: FEB 25 1963 STATE SUPERVISOR  
 SERIAL NO. 384

### TAX MAP

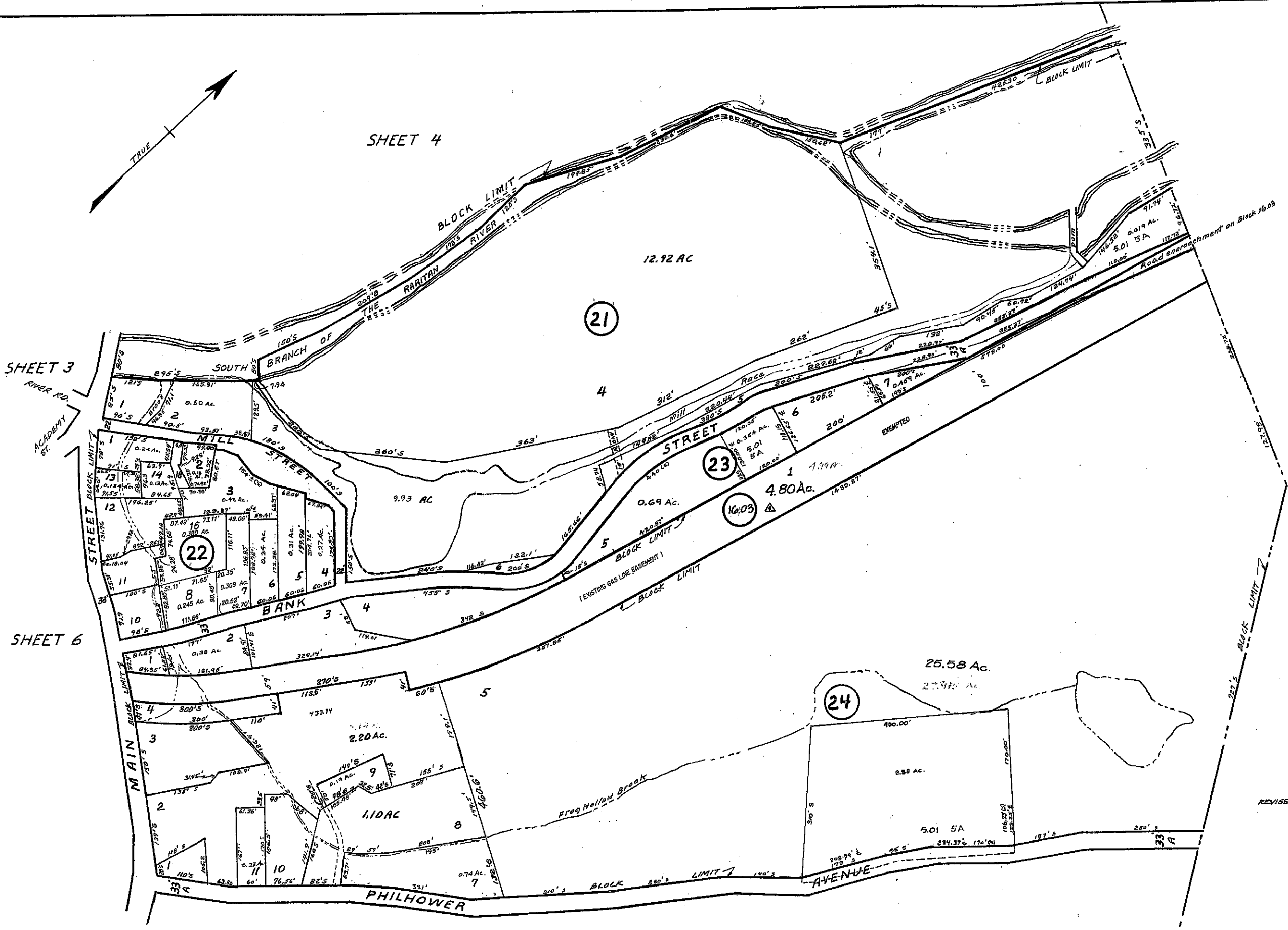
**BOROUGH OF CALIFON**  
 HUNTERDON CO., NEW JERSEY  
 SCALE: 1"=100' DATE: DEC. 1962

FREDERICK M. GALLOWAY #3668  
 GUINEA HOLLOW RD. CALIFON, N.J.  
 REVISED OCT 1964 TO 1962 APPROX APRIL 1972

THIS SHEET WAS PREPARED UTILIZING COMPUTER AIDED DRAFTING. THE PREVIOUSLY







TEWKSBURY TOWNSHIP

REVISED BY KELLER & KIRKPATRICK  
 A DIVISION OF K K & A Limited, Inc.  
 DEC. 5, 1990  
 JAN. 25, 1993  
 JAN. 17, 1996  
 OCT. 30, 1998  
 JAN. 12, 2012

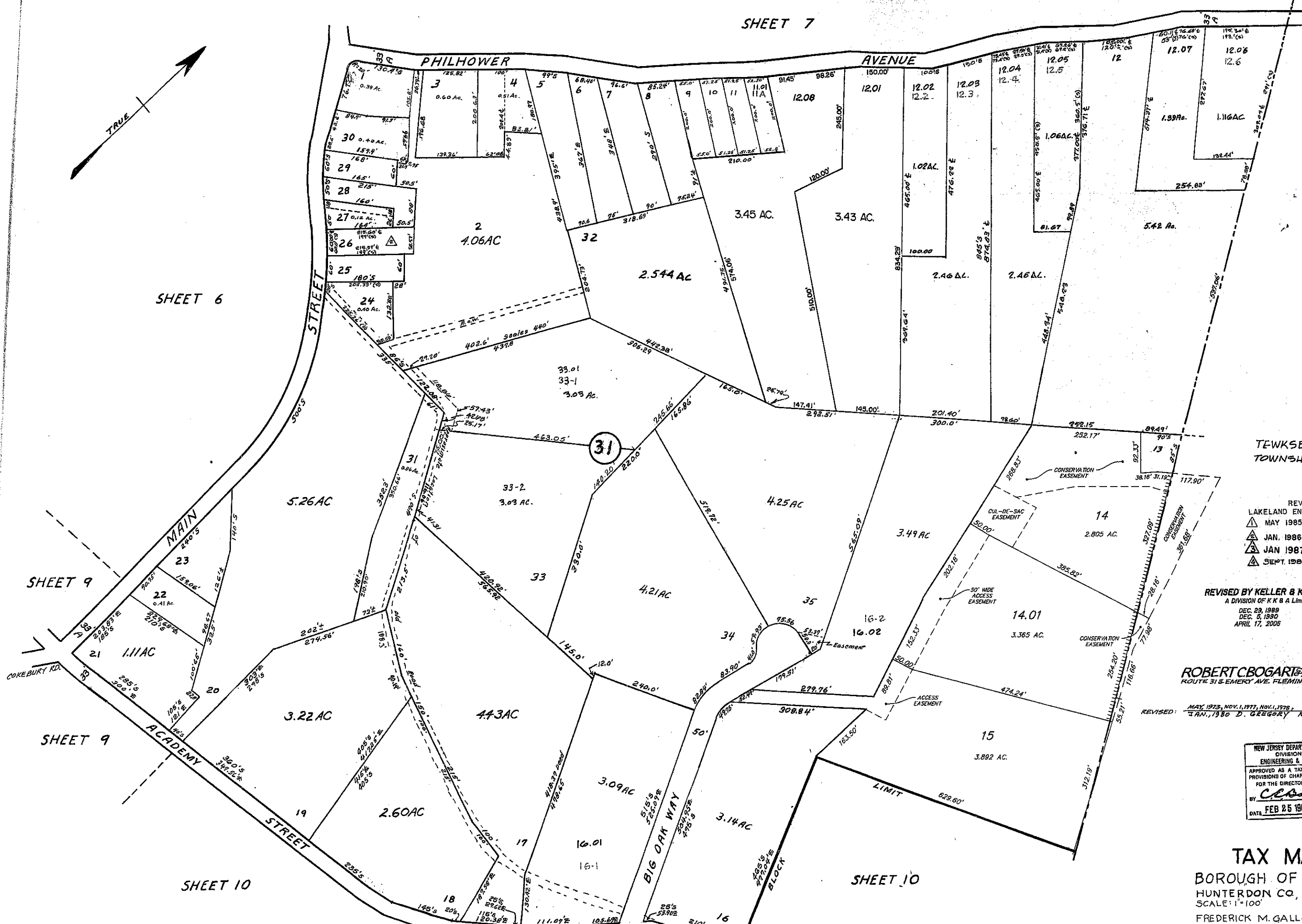
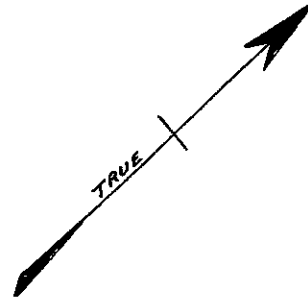
REVISED BY  
 LAKELAND ENGINEERING INC./P.C.  
 ▲ MAY 1985  
 ▲ JAN. 1986  
 ▲ SEPT. 1988  
 ▲ DEC. 1988

ROBERT C BOGART & ASSOCIATES  
 ROUTE 318 EMERY AVE. FLEMINGTON, NEW JERSEY

REVISED: MAY, 1978, NOV. 1, 1977, NOV. 1, 1978

NEW JERSEY DEPARTMENT OF THE TREASURY  
 DIVISION OF TAXATION  
 ENGINEERING & RAILROAD TAX BUREAU  
 APPROVED AS A TAX MAP PURSUANT TO THE  
 PROVISIONS OF CHAPTER 175, LAWS OF 1913, ETC.  
 FOR THE DIRECTOR, DIVISION OF TAXATION  
 BY *Cl...*  
 DATE FEB 25 1963 STATE SUPERVISOR SERIAL NO. 384

TAX MAP  
 BOROUGH OF CALIFON  
 HUNTERDON CO., NEW JERSEY  
 SCALE: 1"=100' DATE: DEC. 1962



SHEET 6

SHEET 9

SHEET 9

SHEET 10

SHEET 10

TEWKSBURY TOWNSHIP

REVISED BY  
LAKELAND ENGINEERING INC./P.C.  
 ▲ MAY 1985  
 ▲ JAN. 1986  
 ▲ JAN 1987  
 ▲ SEPT. 1988

REVISED BY KELLER & KIRKPATRICK  
 A DIVISION OF K K & A Limited, Inc.  
 DEC. 29, 1989  
 DEC. 8, 1990  
 APRIL 17, 2006

ROBERT CBOGART & ASSOCIATES  
 ROUTE 312 EMERY AVE. FLEMINGTON, NEW JERSEY

REVISED: MAY, 1973, NOV. 1, 1977, NOV. 1, 1978, JAN., 1980 D. GREGORY N.J. L.S. 2247

NEW JERSEY DEPARTMENT OF THE TREASURY  
 DIVISION OF TAXATION  
 ENGINEERING & RAILROAD TAX BUREAU  
 APPROVED AS A TAX MAP PURSUANT TO THE  
 PROVISIONS OF CHAPTER 176, LAWS OF 1913, ETC.  
 FOR THE DIRECTOR, DIVISION OF TAXATION  
 BY: *Cl Barnes*  
 DATE: FEB 25 1963 SERIAL NO. 384

**TAX MAP**  
 BOROUGH OF CALIFON  
 HUNTERDON CO., NEW JERSEY  
 SCALE: 1"=100' DATE: DEC. 1962  
 FREDERICK M. GALLOWAY #3668  
 GUNEA HOLLOW RD. CALIFON N.J.



LEBANON TOWNSHIP

LEBANON TOWNSHIP

TEWKSBURY TOWNSHIP

16.27 Ac.

9.00 AC.

4.425 Ac

1.07Ac.

12.30 Ac.

2.01  
2-1  
30 AC.

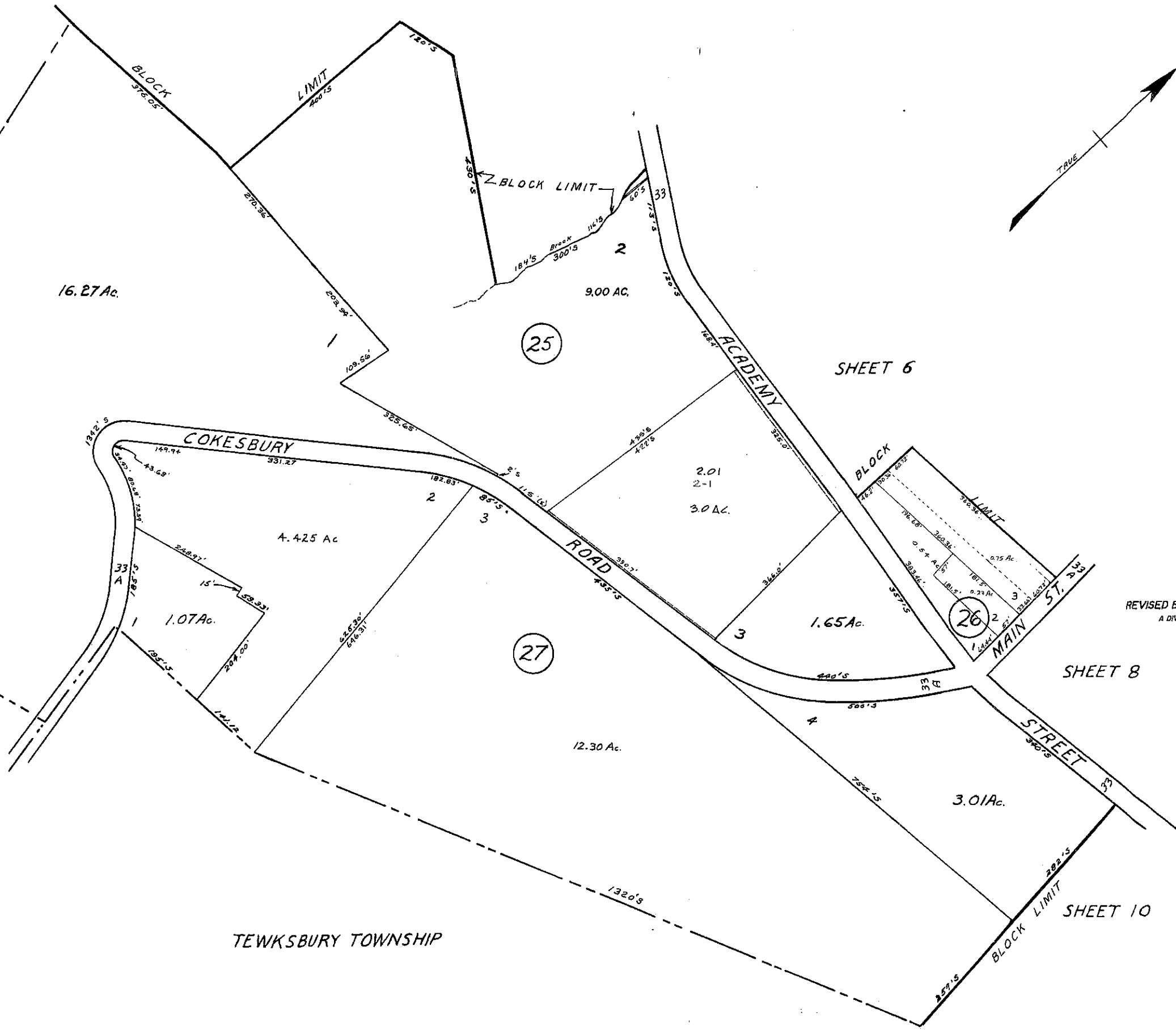
1.65Ac.

3.01Ac.

25

27

26



REVISED BY KELLER & KIRKPATRICK  
 A DIVISION OF K K & A Limited, Inc.  
 DEC. 5, 1980  
 OCT. 30, 1988

REVISED BY  
 LAKELAND ENGINEERING INC./P.C.  
 ▲ MAY 1985  
 ▲ SEPT. 1988

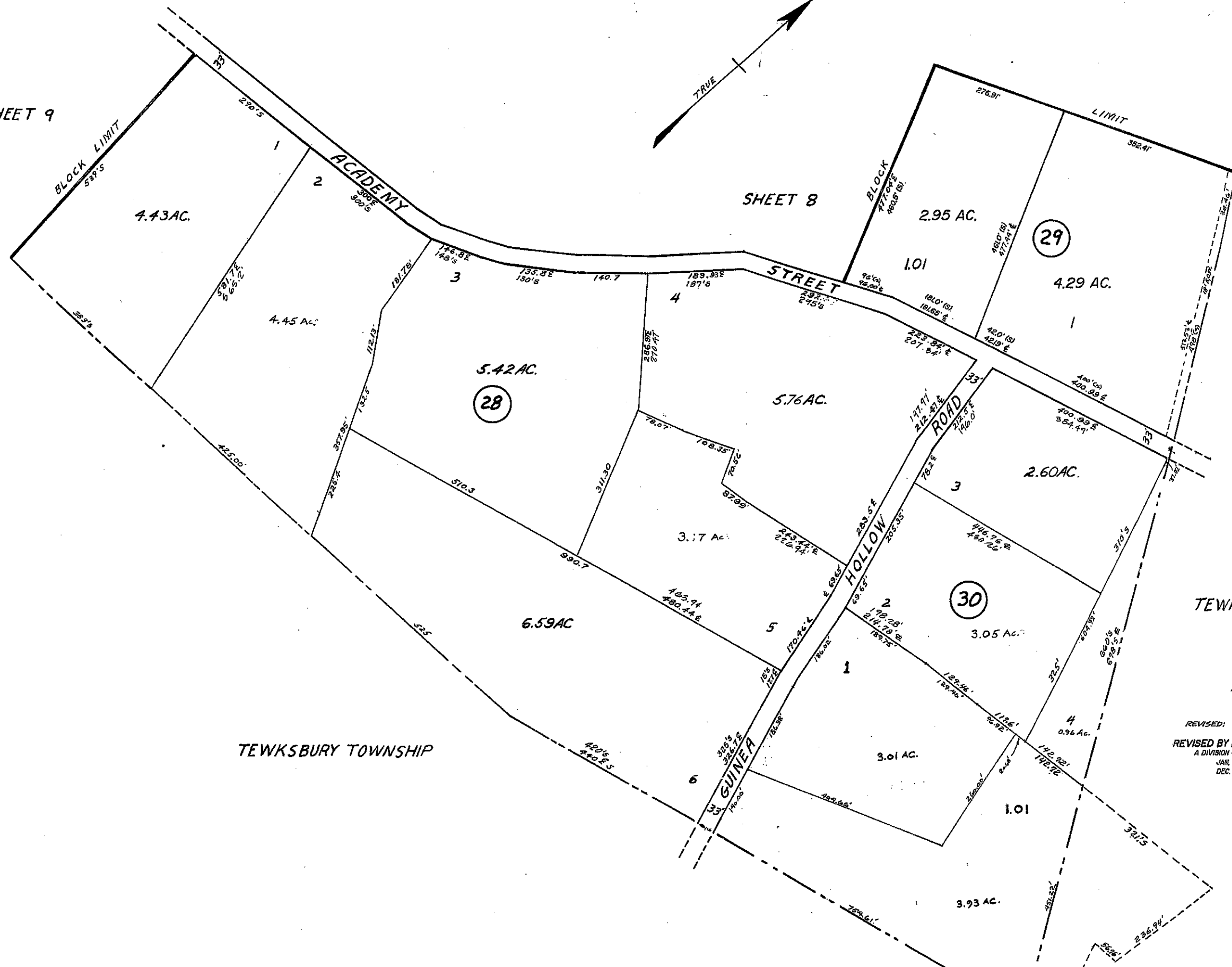
NEW JERSEY DEPARTMENT OF THE TREASURY  
 DIVISION OF TAXATION  
 ENGINEERING & RAILROAD TAX BUREAU  
 APPROVED AS A TAX MAP PURSUANT TO THE  
 PROVISIONS OF CHAPTER 176, LAWS OF 1913, ETC.  
 FOR THE DIRECTOR, DIVISION OF TAXATION  
 BY *Clarence*  
 DATE FEB 25 1963 STATE SUPERVISOR SERIAL NO. 384

TAX MAP  
 BOROUGH OF CALIFON  
 HUNTERDON CO., NEW JERSEY  
 SCALE: 1"=100' DATE: DEC 1962

ROBERT C. BOGART & ASSOCIATES  
 1000 WASHINGTON, NEW JERSEY

SHEET 9

SHEET 8



REVISED BY  
 LAKELAND ENGINEERING INC./P.C.  
 ▲ JAN 1986  
 ▲ SEPT. 1988

TEWKSBURY TOWNSHIP

ROBERT C. BOGART & ASSOCIATES  
 ROUTE 31 & EMERY AVE FLEMINGTON, NEW JERSEY

REVISED: MAY, 1975, NOV. 1, 1977, NOV. 1, 1978

REVISED BY KELLER & KIRKPATRICK  
 A DIVISION OF K K & A Limited, Inc.  
 JAN. 12, 1990  
 DEC. 5, 1990

NEW JERSEY DEPARTMENT OF THE TREASURY  
 DIVISION OF TAXATION  
 ENGINEERING & RAILROAD TAX BUREAU  
 APPROVED AS A TAX MAP PURSUANT TO THE  
 PROVISIONS OF CHAPTER 176, LAWS OF 1913, ETC.  
 FOR THE DIRECTOR, DIVISION OF TAXATION  
 BY *C. L. Barnes*  
 DATE FEB 25 1993 SERIAL NO. 384

TAX MAP  
 BOROUGH OF CALIFON  
 HUNTERDON CO. NEW JERSEY